



# Notice of archaeological excavation works, Greatworth to Edgcote

November 2020 | [www.hs2.org.uk](http://www.hs2.org.uk)

High Speed Two (HS2) is the new high speed railway for Britain. We are continually reviewing the works on our construction sites in line with Government and Public Health England (PHE) advice on dealing with COVID-19. The Government's current strategy makes it clear that construction activity can continue as long as it complies with this guidance.

Please be assured that only sites that can operate within the guidelines are operational. All sites will remain under constant review. We have postponed all face-to-face engagement events and meetings and have put in place a number of channels to communicate with communities, such as letters and phone calls, as well as updates and alerts from each of the local community websites. You can sign up for regular updates in your local area at [www.hs2innorthants.co.uk](http://www.hs2innorthants.co.uk)

## What will be doing?

We have recently carried out archaeological survey and trial trench evaluation work to identify areas of possible archaeological interest. The next stage of our investigation work will involve topsoil excavation, mitigating and recording artefacts at four locations: Blackgrounds Farm, North of Thorpe Mandeville, South East of Thorpe Mandeville and Greatworth Hall.

Within these sites we have identified areas of archaeological interest and these works will enable a greater understanding of the history of the area. Once the work is completed, the excavated areas will be reinstated. The investigations will be undertaken by teams of archaeologists using mechanical excavators and hand tools. There will be archaeologists, plant operators and management teams on site.

**If you have a question about HS2 or our works, please contact our HS2 Helpdesk team on 08081 434 434 or email [hs2enquiries@hs2.org.uk](mailto:hs2enquiries@hs2.org.uk)**

### Duration of works

The works will start end of November 2020 and continue until June 2021.

Normal working hours:

Monday to Friday 8am – 6pm and Saturday 8am to 1pm (if required)

Our contractors may also be on site for one hour's start-up and shutdown outside of these times.

### What to expect

Some additional traffic on local roads.

Site operated with 24hr security and temporary flood lighting.

Site storage and welfare compound.

### What we will do

Manage any impacts, such as traffic and noise with the aim of reducing or removing them.

# Notice of archaeological excavation works, Greatworth to Edgcote

Notification



[www.hs2.org.uk](http://www.hs2.org.uk)

## Blackgrounds farm

The mitigation areas will be contained within the area of Blackgrounds Farm. We shall access this site off Culworth Road and we will be placing warning signage to alert motorists to turning vehicles. Please see the map enclosed for further detail. The site compound will contain track matting, security, lighting, fencing and welfare units.

At the sites busiest periods there will be 9 archaeologists working on site, but this will vary over the works programme.

The work is scheduled to start 18 January and will continue until June 2021 with a 2 week break over the December holiday season.

## South East of Thorpe Mandeville

The mitigation work will lie just south of Thorpe Mandeville and north of the B4525 in four separate areas. We shall access this site off the unclassified road adjacent to the former model flying club. Please refer to the map enclosed for further detail. The site compound will contain track matting, security, lighting, fencing and welfare units.

At the busiest periods there will be 6 archaeologists working on site, but this will vary over the work's schedule.

This archaeological mitigation is scheduled to start 30 November and will continue until February 2021, with a 2 week break over the December holiday season.

## North of Thorpe Mandeville

The mitigation work will lie just north of Lower Thorpe and Banbury Lane on an access through Culworth Grounds Farm. Signage will be placed on Banbury Lane to warn motorists of turning works vehicles. Please look at the map enclosed for further detail. The associated site compound will contain track matting, security, lighting, fencing and welfare units.

At the busiest periods there will be 6 archaeologists working on site, but this will vary over the works schedule.

This archaeological mitigation is scheduled to start 4 January and will continue until April 2021, with a 2 week break over the December holiday season.

# Notice of archaeological excavation works, Greatworth to Edgcote

Notification



[www.hs2.org.uk](http://www.hs2.org.uk)

## Greatworth Hall

The mitigation site will be located at the Greatworth Hall site using the access track for Greatworth Hall to access the excavation sites. Please look at the map enclosed for further detail. Signage will be erected along the B4525 to warn of a works access.

The associated site compound will contain track matting, security, lighting, fencing and welfare units.

At the busiest periods there will be 6 archaeologists working on site, but this will vary over the works schedule.

This work is scheduled to start on 4 January and will continue until April 2021, with a 2 week break over the December holiday season.

## Test Pitting at Lower Thorpe and Edgcote

This work will be carried out by Archaeological Research Services, Fusion's archaeology subcontractor. The work's purpose is to further investigate two archaeological 'blank areas' in which our scanning equipment hasn't revealed significant archaeology. We shall initially carry out surveys followed by digging a series of 50cm by 50cm square test pits. The level of test pitting will be determined by the results of the surveys carried out prior to this. The location of the site along with works access points can be viewed on the map enclosed. This work will commence 6 December and continue until January 2021.

## How may this affect you?

We will be working hard to ensure any impacts on residents are kept to a minimum during these and all our future works. You may notice a little extra traffic on the road immediately around the sites with workers and delivery vehicles moving to and from the site. There may be some noise from the machinery. All machinery will be restricted to running between the hours of 8am to 6pm Monday to Friday.

For this stage of works we will not be closing any Public Rights of Way.

The existing temporary traffic management signage on the Banbury Road will remain the same, utilising signage installed for previous trial trenching works conducted to the north.

For further updates about these works and HS2 in general, please visit [www.hs2innorthants.co.uk](http://www.hs2innorthants.co.uk) where you can sign up to news alerts

Contact our HS2 Helpdesk team on **08081 434 434**

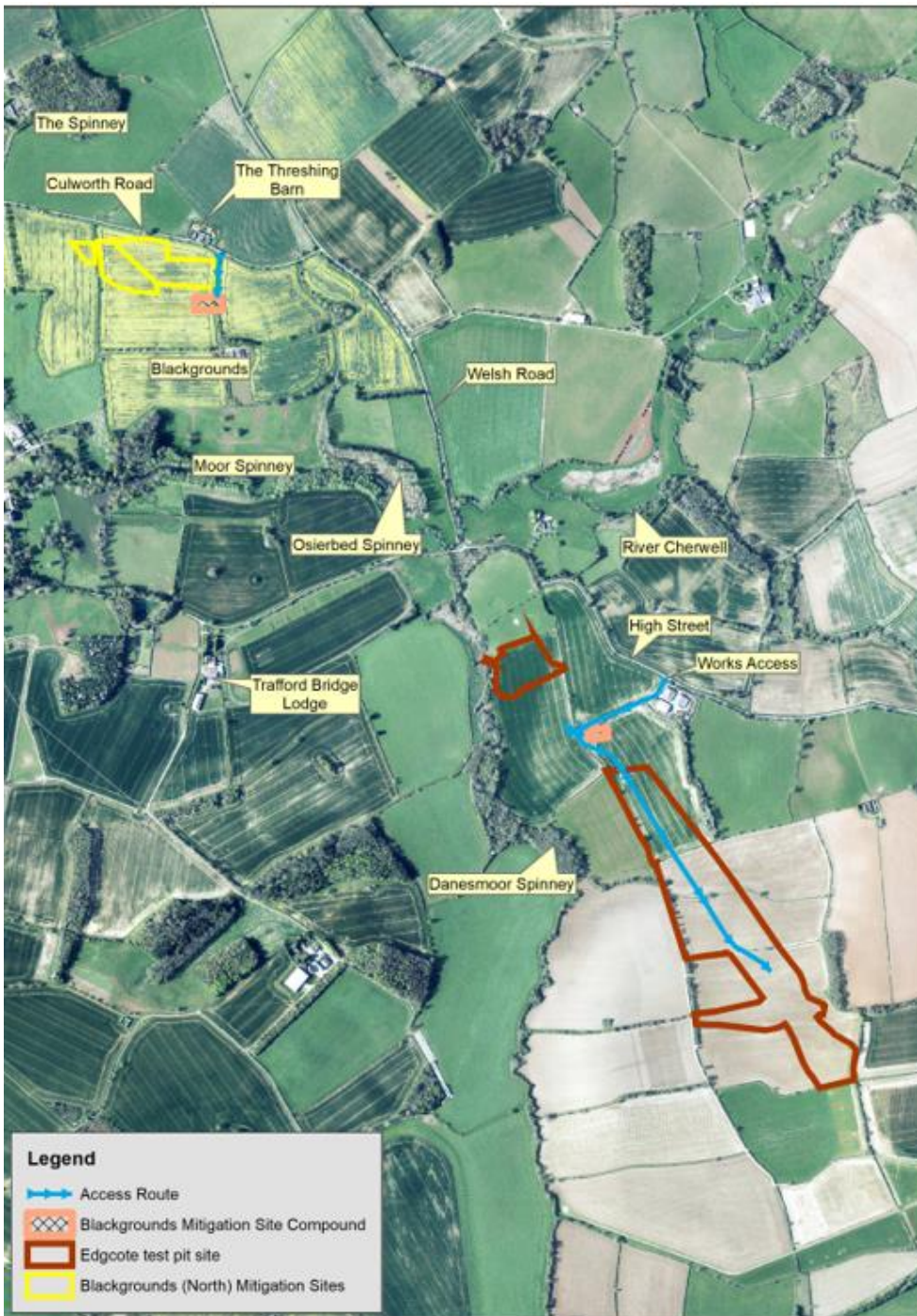
# Notice of archaeological excavation works, Greatworth to Edgcote

Notification



[www.hs2.org.uk](http://www.hs2.org.uk)

**Blackgrounds excavation and Edgcote test pit site locations**



Contact our HS2 Helpdesk team on **08081 434 434**

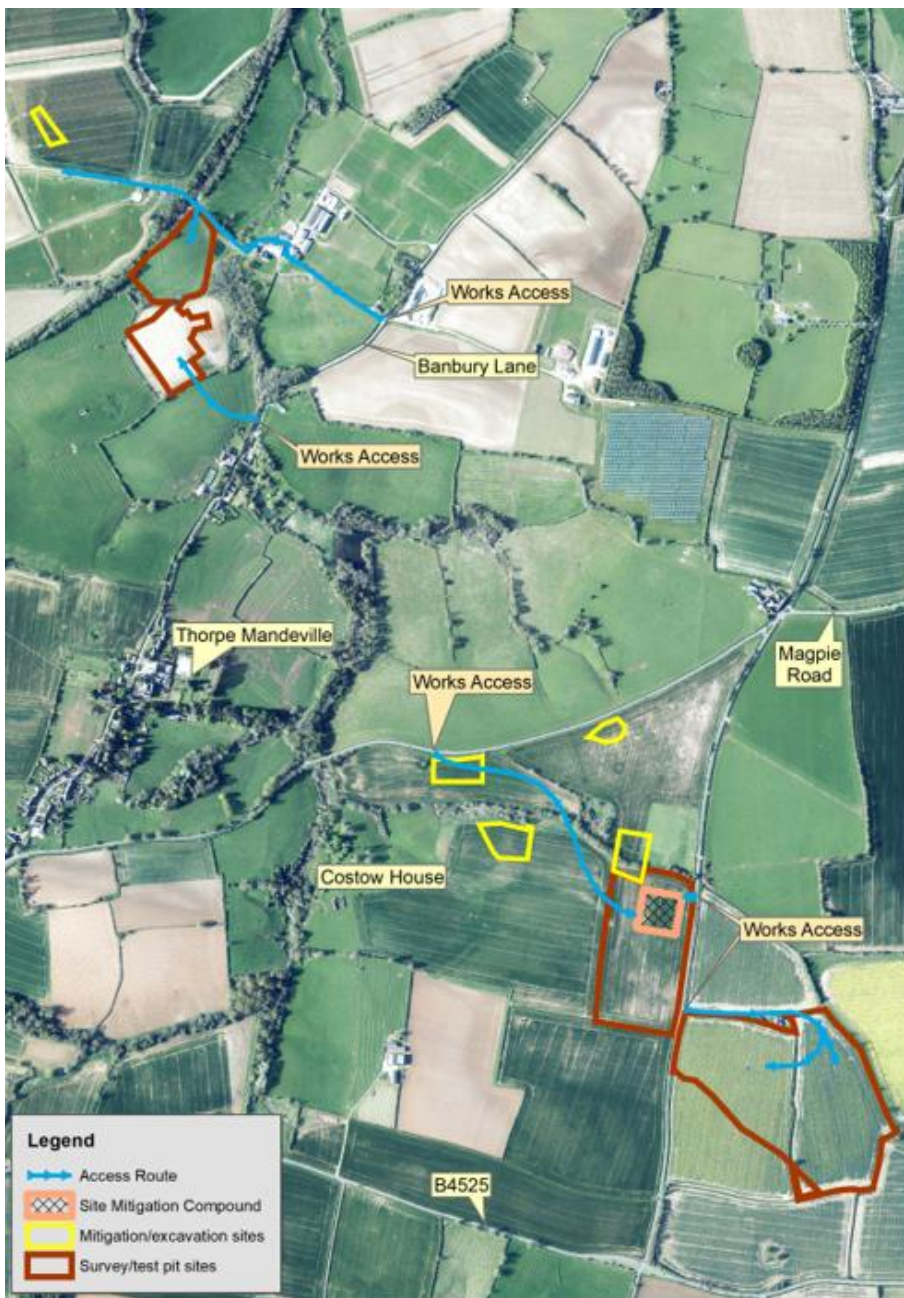
# Notice of archaeological excavation works, Greatworth to Edgcote

www.hs2.org.uk

Notification



Lower Thorpe and Thorpe Mandeville excavation and test pitting site locations



Contact our HS2 Helpdesk team on **08081 434 434**

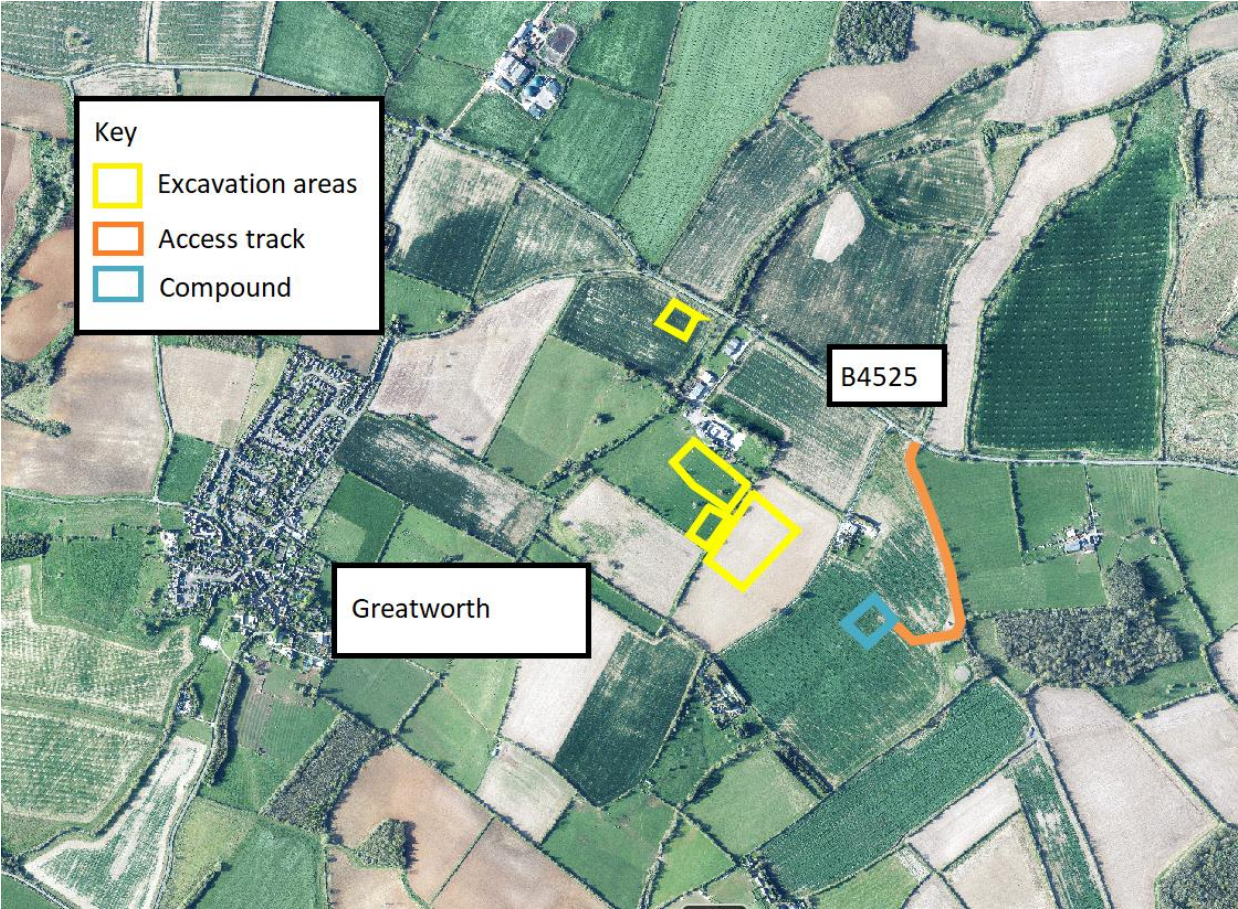
# Notice of archaeological excavation works, Greatworth to Edgcote

[www.hs2.org.uk](http://www.hs2.org.uk)

Notification



## Greatworth Hall excavation site location



# What else is happening in your area?

[www.hs2.org.uk](http://www.hs2.org.uk)

## Contact our new HS2 Helpdesk team

Our new Helpdesk team is based in our Head Office in Birmingham. This is so that we can provide you with the best service possible. Our team is here to listen and respond to your enquiry, complaint or feedback to help us be a good neighbour.

You can contact our Helpdesk team all day, every day of the year on:

Freephone: **08081 434 434**

Minicom: **08081 456 472**

Email: [hs2enquiries@hs2.org.uk](mailto:hs2enquiries@hs2.org.uk)

## Keep up-to-date with your local community website

To find out more about what's happening in your area and receive regular email updates, you can sign up to our local community websites at: [www.hs2inyourarea.co.uk](http://www.hs2inyourarea.co.uk).

## About our Community and Business Funds

We are offering two funds that are available to local communities and businesses between the West Midlands and London, to help with the disruption caused by our construction work. These are the Community and Environment Fund (CEF) and the Business and Local Economy Fund (BLEF).

The CEF is designed to give communities the opportunity to share in the benefits of HS2. It is an allocated fund that communities are able to apply for, to help to support local projects that aim to improve their local area.

The BLEF is designed to support local economies that may be disrupted by the construction of HS2. BLEF grants are for local business support organisations and local authorities to help maintain business activity in local communities.

For more information about each of these funds, including how to apply, please visit: <https://www.groundwork.org.uk/hs2funds>



# Keeping you informed

We are committed to keeping you informed about work on HS2. This includes ensuring you know what to expect and when to expect it, as well as how we can help.

## Residents' Charter and Commissioner

The Residents' Charter is our promise to communicate as clearly as we possibly can with people who live along or near the HS2 route. [www.gov.uk/government/publications/hs2-residents-charter](http://www.gov.uk/government/publications/hs2-residents-charter)

We also have an independent Residents' Commissioner whose job is to make sure we keep to the promises we make in the Charter and to keep it under constant review. Find reports at: [www.gov.uk/government/collections/hs2-ltd-residents-commissioner](http://www.gov.uk/government/collections/hs2-ltd-residents-commissioner)

You can contact the Commissioner at: [residentscommissioner@hs2.org.uk](mailto:residentscommissioner@hs2.org.uk)

## Construction Commissioner

The Construction Commissioner's role is to mediate and monitor the way in which HS2 Ltd manages and responds to construction complaints. You can contact the Construction Commissioner by emailing: [complaints@hs2-cc.org.uk](mailto:complaints@hs2-cc.org.uk)

## Property and compensation

You can find out all about HS2 and properties along the line of route by visiting: [www.gov.uk/government/collections/hs2-property](http://www.gov.uk/government/collections/hs2-property)  
Find out if you're eligible for compensation at: [www.gov.uk/claim-compensation-if-affected-by-hs2](http://www.gov.uk/claim-compensation-if-affected-by-hs2)

## Holding us to account

If you are unhappy for any reason you can make a complaint by contacting our HS2 Helpdesk team. For more details on our complaints process, please visit our website: [www.hs2.org.uk/how-to-complain](http://www.hs2.org.uk/how-to-complain)

## Contact Us

Contact our HS2 Helpdesk team all day, every day of the year on:

 Freephone **08081 434 434**

 Minicom **08081 456 472**

 Email **[hs2enquiries@hs2.org.uk](mailto:hs2enquiries@hs2.org.uk)**

Write to:

**FREEPOST**

**HS2 Community Engagement**

Website **[www.hs2.org.uk](http://www.hs2.org.uk)**

To keep up to date with what is happening in your local area, visit: **[www.hs2inyourarea.co.uk](http://www.hs2inyourarea.co.uk)**

**Please contact us if you'd like a free copy of this document in large print, Braille, audio or easy read. You can also contact us for help and information in a different language.**

HS2 Ltd is committed to protecting personal information. If you wish to know more about how we use your personal information please see our Privacy Notice <https://www.gov.uk/government/publications/high-speed-two-ltd-privacy-notice>

**Reference number:** **FUS\_AWN\_0140**

HS2-EWFusion -Ph1-Ar-Ce-C2-AgFS-41-13/11/2020

High Speed Two (HS2) Limited, registered in England and Wales.

Registered office: Two Snowhill, Snow Hill Queensway, Birmingham B4 6GA.

Company registration number: 06791686. VAT registration number: 888 8512 56.